



FormCLIC



Installation Guide

Version 1.0

Updated: November 14, 2008

Union des Producteurs Agricoles building • 555 Roland-Therrien blvd. suite 050 • Longueuil, QC J4H 4E8

ATQ: Telephone: (450) 677-1757 • Toll-free: 1-866-270-4319

Fax: (450) 679-6547 • Toll-free: 1-866-679-6547 • 1-866-473-4033

UPA: Telephone: (450) 679-0540

Website: www.agri-tracabilite.qc.ca

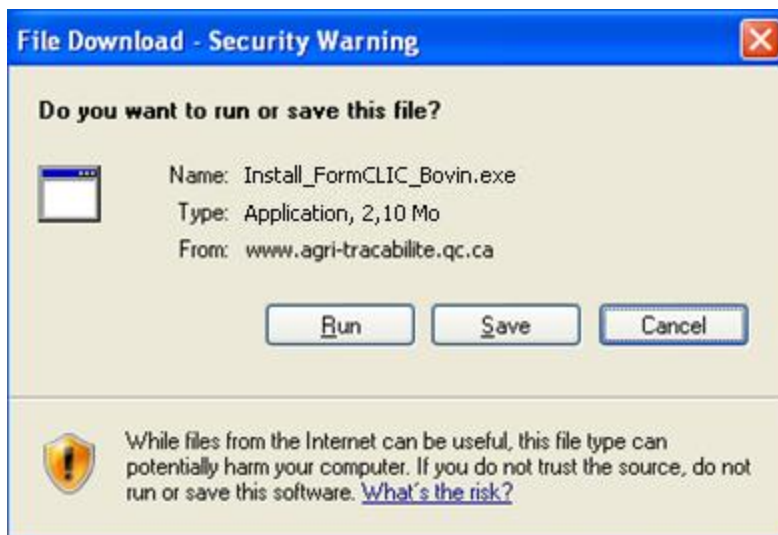
Table of Contents

- 1 Begin setup 1**
- 1.1 Select destination directory 3
- 1.2 Additional tasks..... 4
- 1.3 Continue installation..... 5
- 1.4 Import configuration files 5
- 1.5 Import data files 6
- 1.6 Delete old *FormCLIC* versions 8
- 1.7 Installing FormCLIC 9
- 1.8 Installation complete10

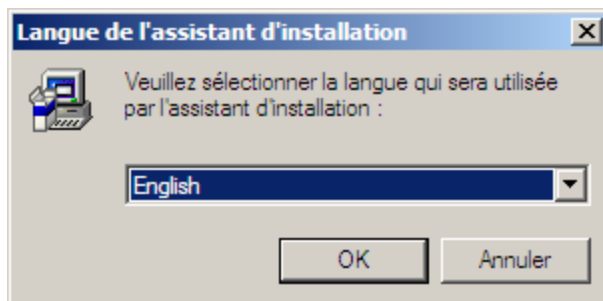
1 BEGIN SETUP

The FormCLIC installation procedure is the same for all existing versions of FormCLIC (Bovin (Cattle), Ovin (Sheep), Cervide (Cervid) and Abattoir (Slaughterhouse) versions). Any reference in these instructions to “FormCLIC – Bovin” refers to any other version as well.

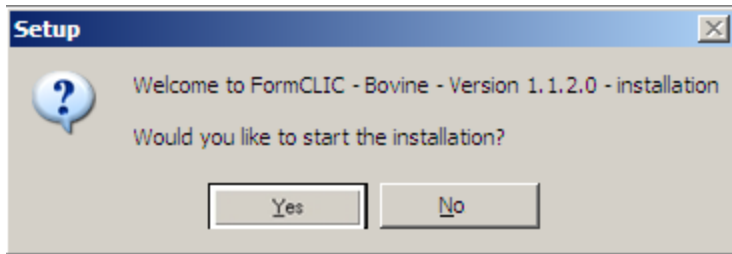
- Click .
- Click “Run”.



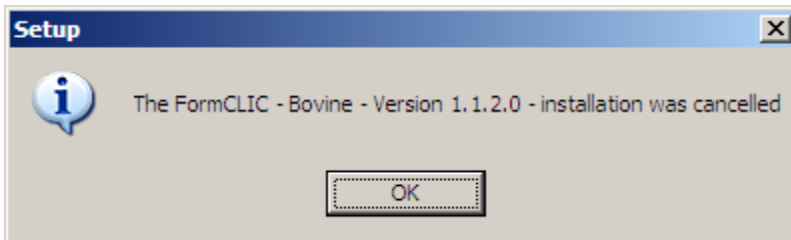
- Select the language you wish to use for the installation.



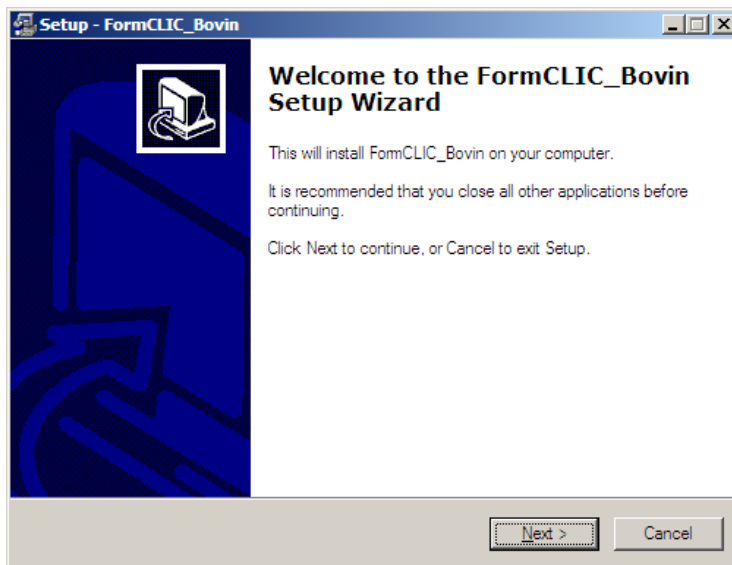
- Confirm setup by **clicking** “OK”.



- Click “No” to cancel the installation. This window will appear:



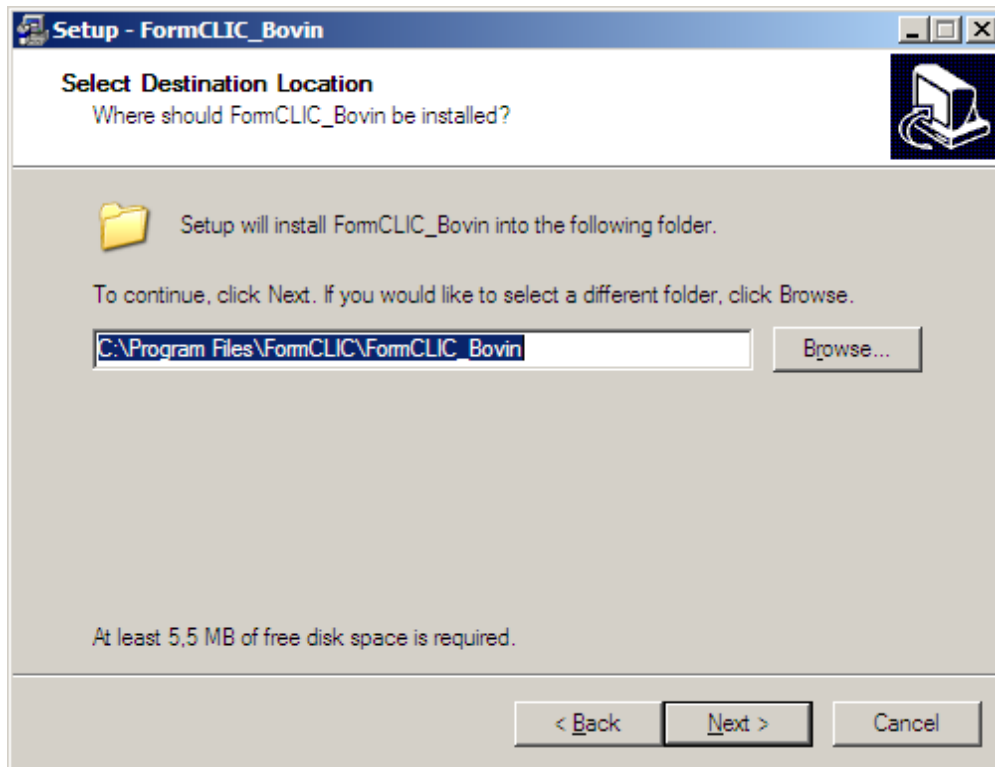
- Click “Yes” to begin setup.



- Click “Next”.

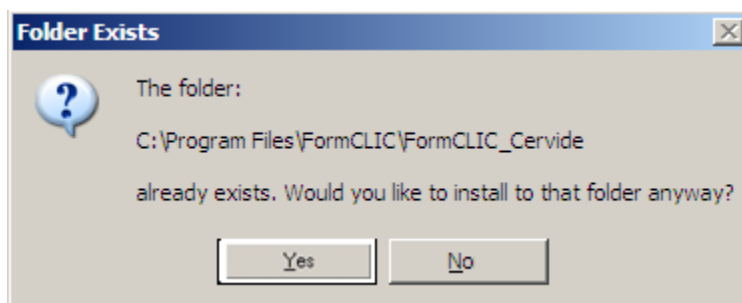
1.1 Select destination directory

*It is **STRONGLY** recommended that you select the default installation folder: C:\Program Files\FormCLIC\FormCLIC_Bovin.*



- Click “Next”.

If the destination folder already exists, the application will ask you if you still want to proceed with the installation in this folder.

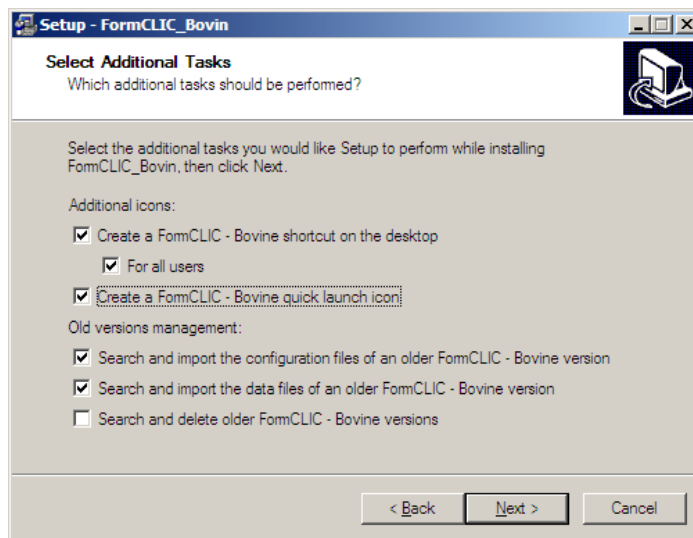


- Click “Yes” to continue installing the application in the selected folder *C:\Program Files\FormCLIC\FormCLIC_Bovin*.

1.2 Additional tasks

You now have several options:

- **Create shortcuts:**
 1. “Create a *FormCLIC – Bovin* shortcut on the desktop” is checked by default.
 2. If your computer has multiple user names, “For all users” is checked by default.



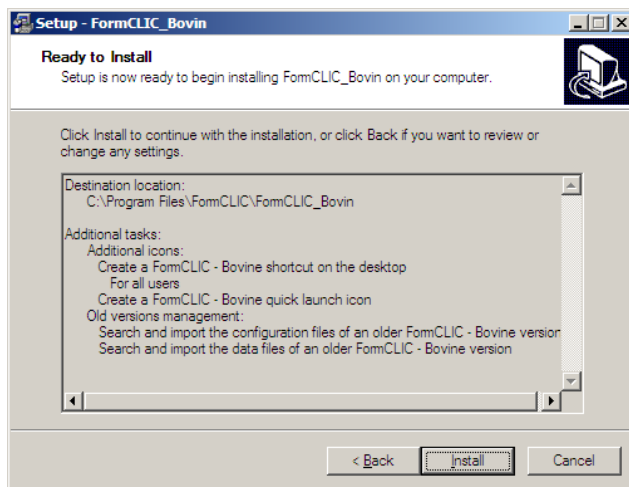
3. **Check** “Create a *FormCLIC – Bovin* quick launch icon” if you would like to create a shortcut in your Quick Launch.

Quick Launch:



- **Management of old versions:**
 4. **Check** “Search and import the configuration files of an older *FormCLIC – Bovin* version” if you would like to keep the same **preferences** used in previous versions of *FormCLIC – Bovin*.
 5. **Check** “Search and import the data files of an older *FormCLIC – Bovin* version” if you would like to keep the **data files** created to date by *FormCLIC – Bovin*.
 6. **Check** “Search and delete older *FormCLIC – Bovin* versions” if you would like to **delete** ALL other executable files of previous versions of *FormCLIC – Bovin*.
- Click “*Next*”.

1.3 Continue installation



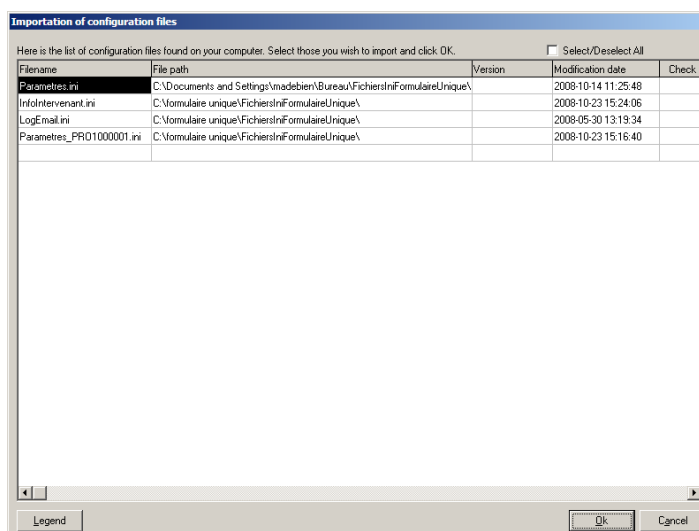
- Click “*Install*” to continue with the installation – **OR** – Click “*Back*” to review or modify any installation settings.

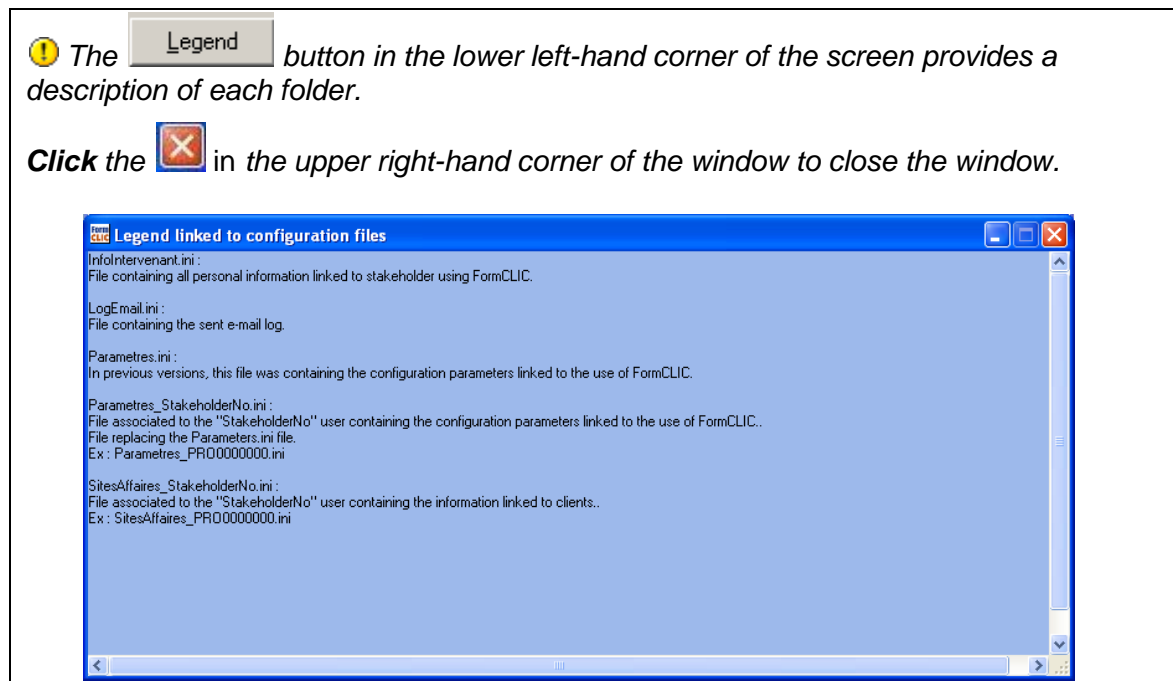
1.4 Import configuration files

The Setup Wizard is now searching for all existing *FormCLIC – Bovin* configuration files on your hard (C:\) drive.

- You may now select the configuration files you wish to import (to be copied in the appropriate directory to be used by the new *FormCLIC*).

⚠ If the Wizard finds *several configuration files with the same name* in different directories, you may *only import one file*.



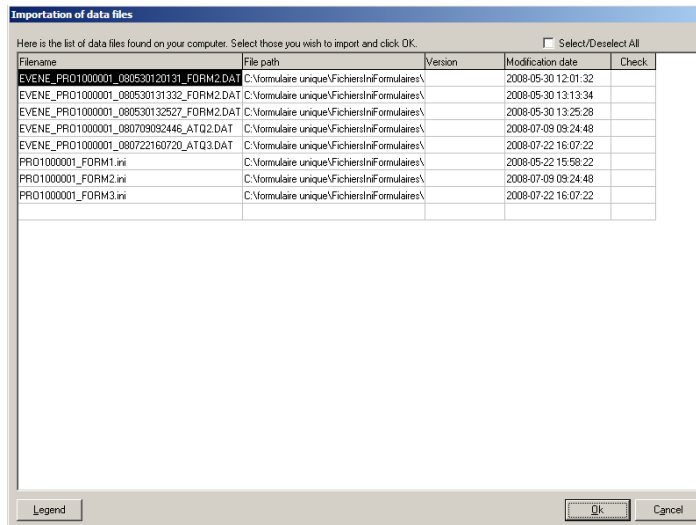


- There are different ways of selecting or deselecting folders:
 1. Check the Select/Deselect All box to select or deselect ALL folders.
 2. Double-click the boxes in the “Select” column to make your selections, which will then be marked by an X.
 3. Double-click the boxes in the “Select” column to deselect any folder.
 4. Hit the space bar in the “Select” column to make your selections, which will then be marked by an X.
 5. Hit the space bar in the “Select” column to deselect any folder.
- Click “OK” to continue.


1.5 Import data files

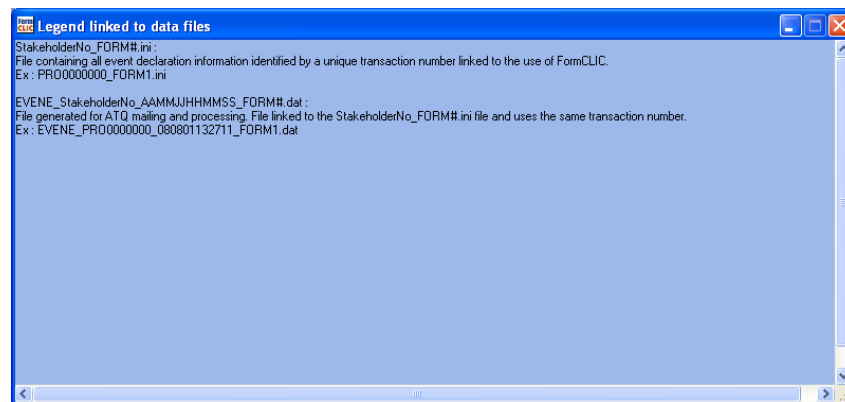
The Setup Wizard is now searching for all existing *FormCLIC – Bovin* data files on your hard (C:) drive.

- You may now select the data files you wish to import (to be copied in the appropriate directory to be used by the new *FormCLIC*).
- ! If the Wizard finds many data files with the same name in different directories, you may *only import one file*.



! The **Legend** button in the lower left-hand corner of the screen provides a description of each folder.

Click the  in the upper right-hand corner of the window to close the window.

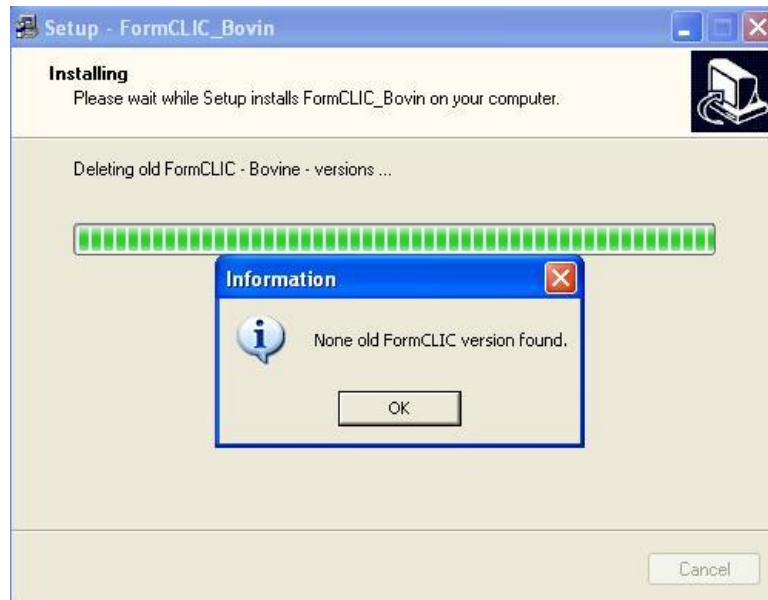


- There are different ways of selecting or deselecting folders:
 1. Check the **Select/Deselect All** box to select or deselect ALL folders.
 2. Double-click the boxes in the “Select” column to make your selections, which will then be marked by an X.
 3. Double-click the boxes in the “Select” column to deselect any folder.
 4. Hit the space bar in the “Select” column to make your selections, which will then be marked by an X.
 5. Hit the space bar in the “Select” column to deselect any folder.
- Click “OK” to continue.

1.6 Delete old *FormCLIC* versions

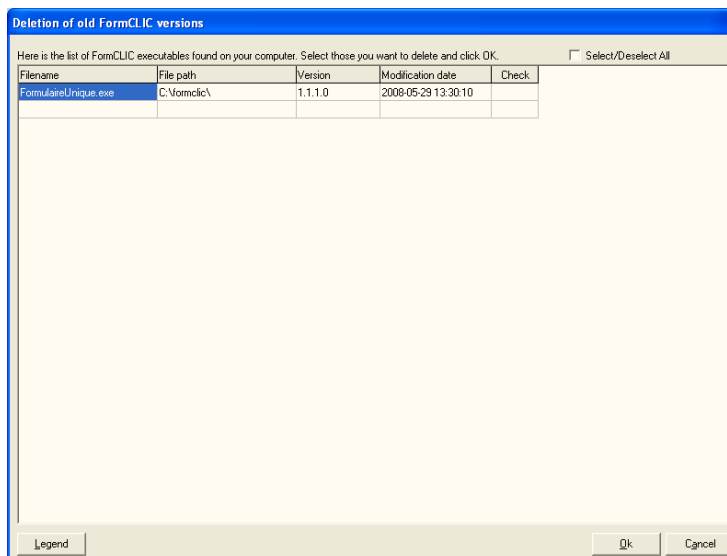
The Setup Wizard is now searching for *ALL* previous versions of the *FormCLIC – Bovin* executable (.exe) files on your hard (C:\) drive.

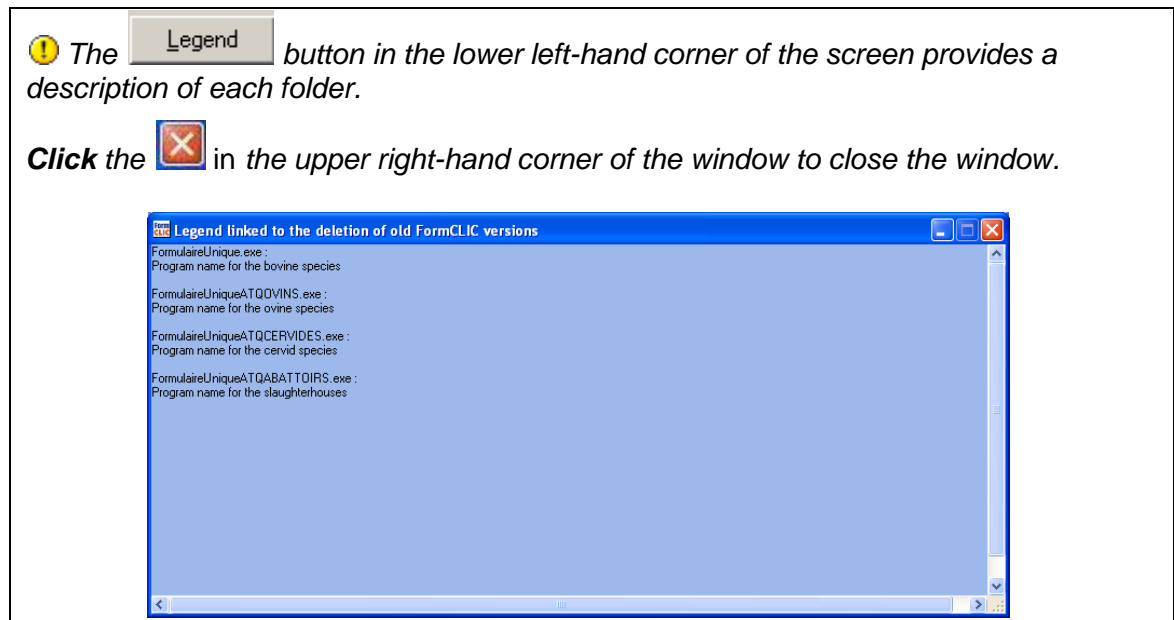
⚠ If the Wizard doesn't find any previous version of the executable (.exe) files, this window will appear:



- Click "OK" to continue

⚠ If the Wizard find one or several previous versions, this window will appear:





- There are different ways of selecting or deselecting folders:
 1. Check the Select/Deselect All box to select or deselect ALL folders.
 2. Double-click the boxes in the “Select” column to make your selections, which will then be marked by an X.
 3. Double-click the boxes in the “Select” column to deselect any folder.
 4. Hit the space bar in the “Select” column to make your selections, which will then be marked by an X.
 5. Hit the space bar in the “Select” column to deselect any folder.
- Click “OK” to continue.

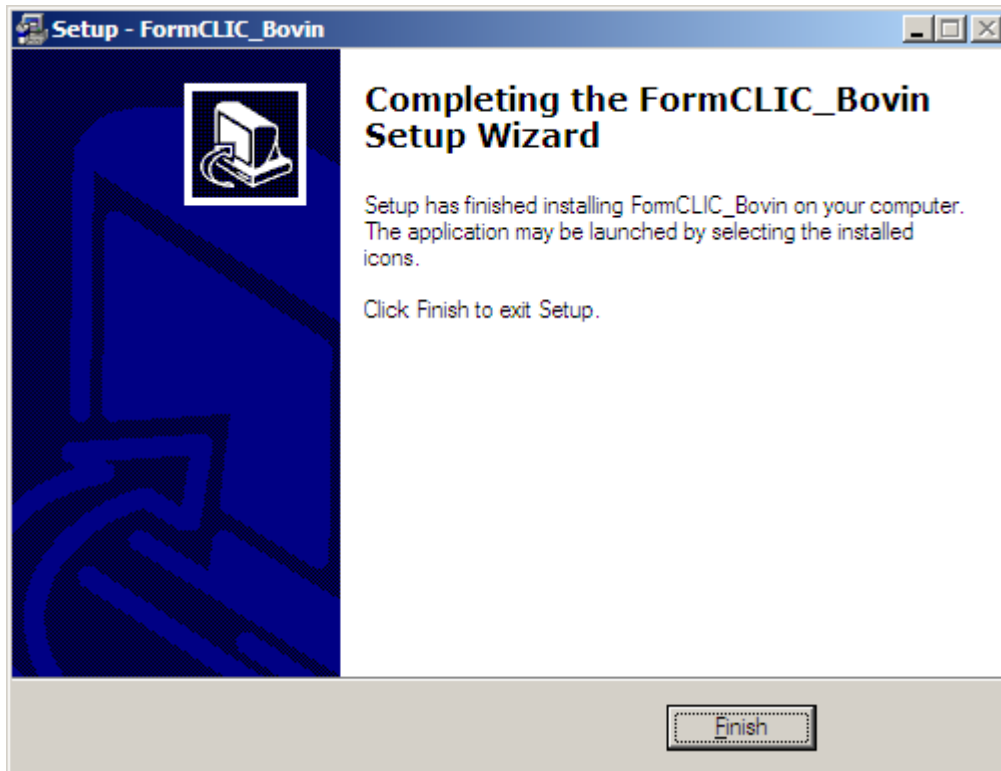
1.7 Installing FormCLIC

- If old versions of *FormCLIC – Bovin* are found, this window will open:



- Click “OK” to continue.

1.8 Installation complete



- Click "*Finish*" to complete the installation.

The *FormCLIC – Bovin* application is now installed, and the shortcut has been saved to your desktop. You may now launch *FormCLIC* by double-clicking on the  icon.