



## ***Guide to Downloading and Installing on Your Computer***

---

## Downloading and Installing *SimpliTRACE Express* on your computer

To install the SimpliTRACE Express application, your computer must meet the following technical requirements:

- **Type of equipment:** installation must take place on a personal computer (also referred to as an office computer). SimpliTRACE Express cannot be installed on a mobile device such as a smartphone or a tablet.
- **Operating System:** Windows Vista, Windows 7, Windows 8, Windows 8.1 and Windows 10. SimpliTRACE Express has not been configured for the MAC computer (Apple).
- **Other technical requirements:** operating the *SimpliTRACE Express* application requires the use of the *Java* software platform. The most recent version of *Java* can be downloaded here: <https://www.java.com/en/download/>.

**IMPORTANT NOTE:** To use SimpliTRACE Express you must be registered with the SimpliTRACE application, which means you must have a user name and password. If you are not yet registered with SimpliTRACE, contact ATQ Customer Service by telephone at 1 866 270-4319.

---

## Installation Steps

To start installing SimpliTRACE Express on your computer, you must first download the application from the ATQ website at [www.atq.qc.ca/en/simplitrace-express](http://www.atq.qc.ca/en/simplitrace-express). Once downloaded, the **installation procedure** can be completed in a few quick steps.

To receive technical support during installation or when using SimpliTRACE Express, contact ATQ's Customer Service at:

### ATQ Technical Support

**Monday to Friday between 8:30 a.m. and 4:30 p.m.**

Tel.: 450 677-1757

Toll-free: 1 866 270-4319

Email: [sac@atq.qc.ca](mailto:sac@atq.qc.ca)

---

## Download and Install SimpliTRACE Express

In order to be able to use SimpliTRACE Express, you have to follow the eight-step procedure described below:

1. Access [www.atq.qc.ca/en/simplitrace-express](http://www.atq.qc.ca/en/simplitrace-express)

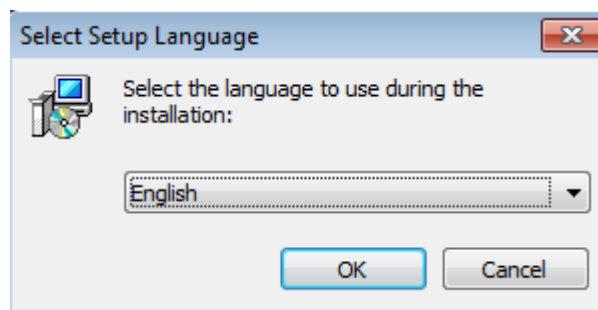
---

2. Click on the *Download* link

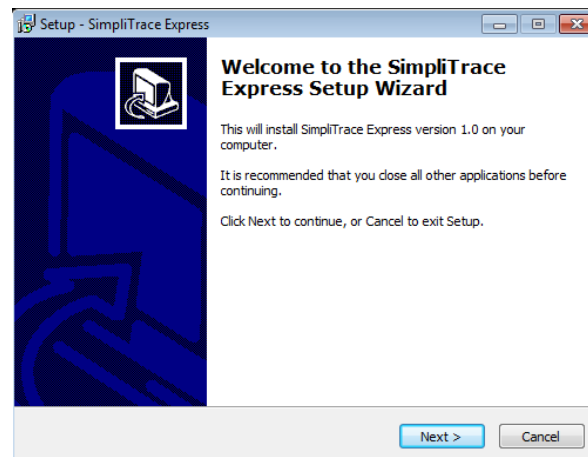
Following this step, a dialogue box will appear on the screen. This dialogue box will allow you to initiate the installation of the application onto your computer with the help of a setup wizard.

---

3. Select the language for the setup wizard




4. Read the welcome message from the setup wizard and then click the *Next* button

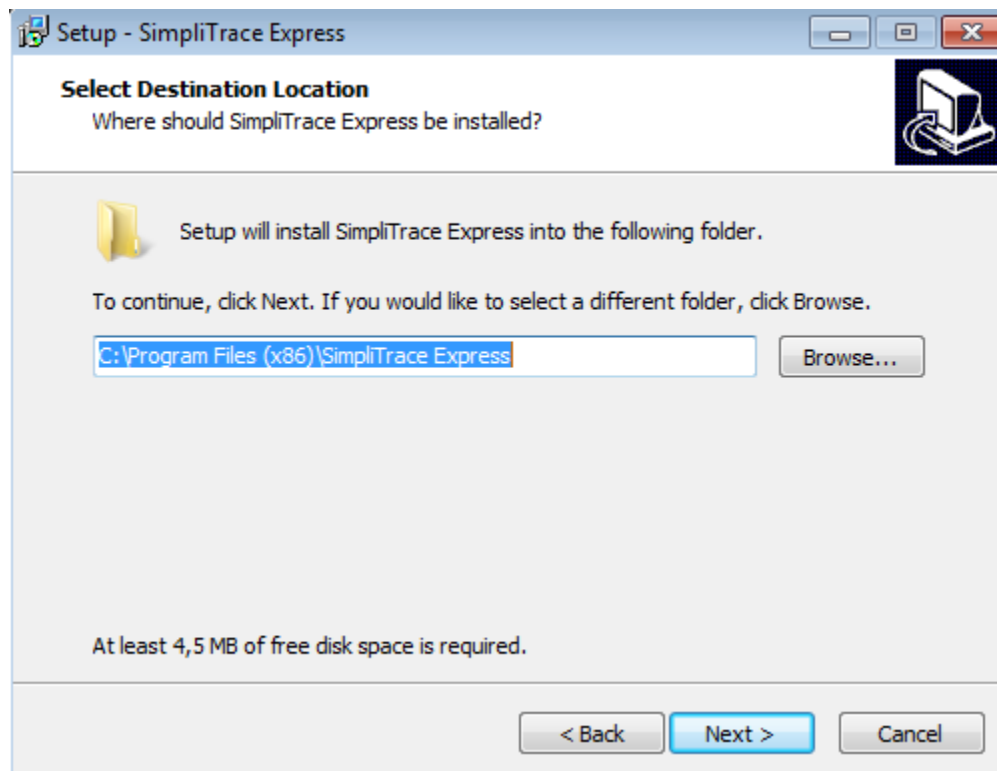


Please note that you can exit the setup wizard at any time by clicking on the **Cancel** button. However, if you cancel the setup procedure, you will not be able to complete the installation of SimpliTRACE Express and you will have to restart the setup wizard.

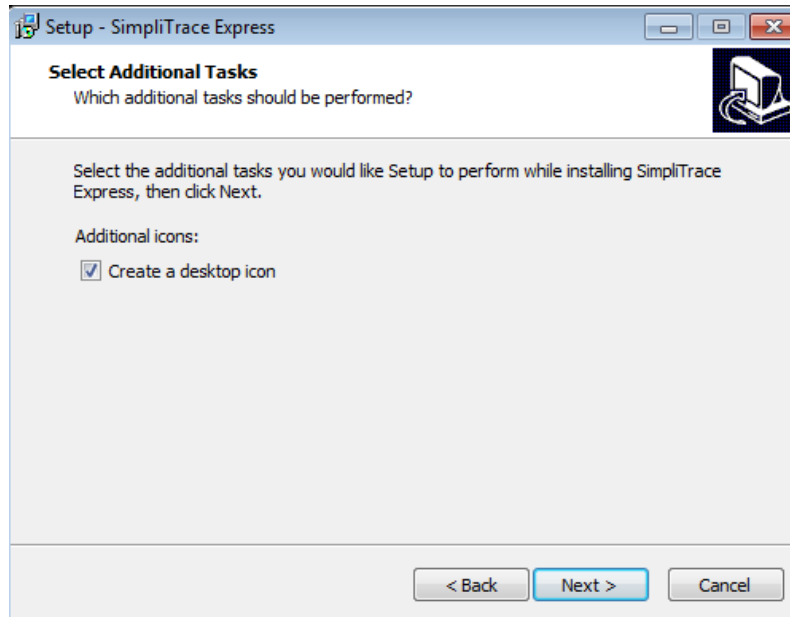
---

## 5. Destination folder: it is preferable to save in the folder suggested by the installation wizard. Click on the **Next** button to continue.

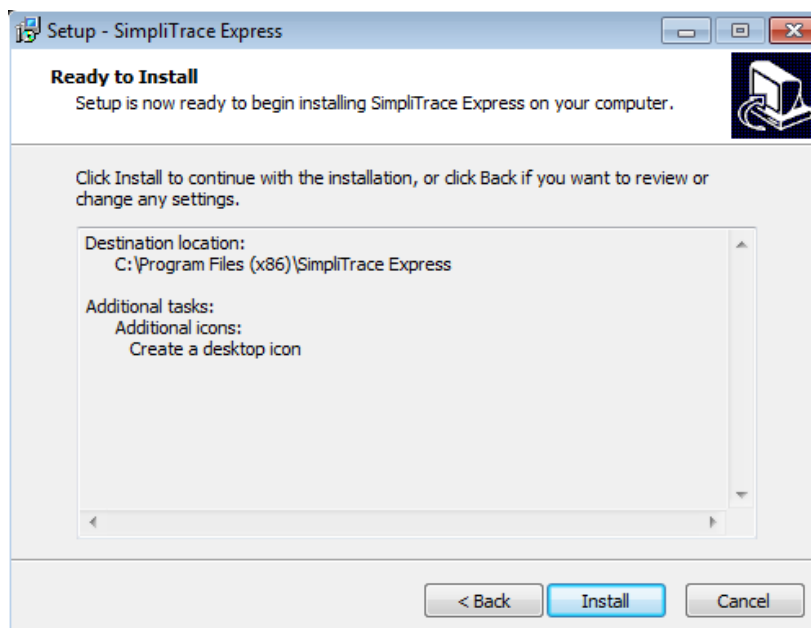
 By default, the installation wizard will suggest that you save SimpliTRACE Express in the folder titled C:\Program Files. We strongly recommend that you do not change the suggested choice.



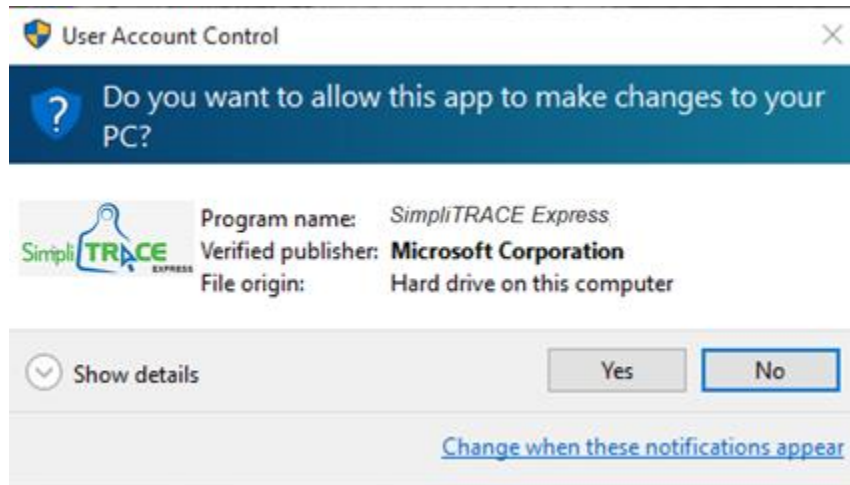
6. Click on the box **“Create a desktop icon”** in order to add a shortcut to the computer’s home screen.



7. The wizard is now ready to install the application. Click on the **Install** button.



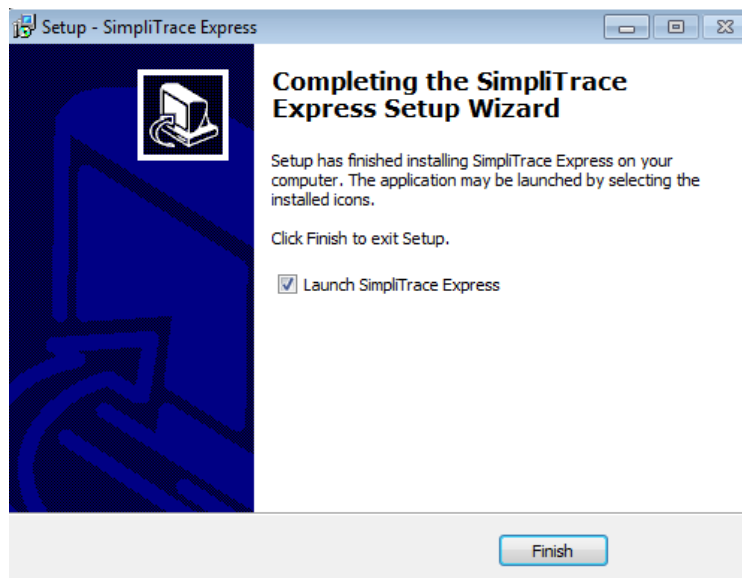
- a. The Windows security features will make this dialogue box appear; you should click on the **Yes** button in order to start the installation.



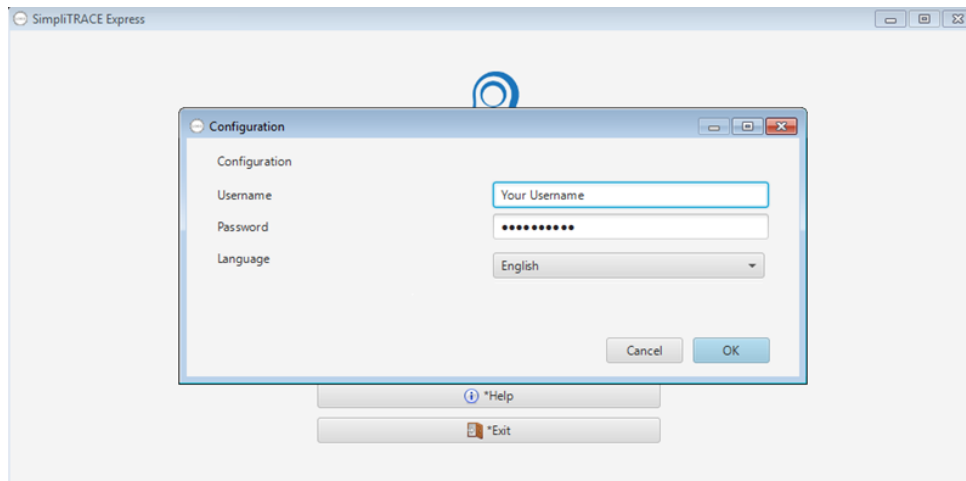
---

## 8. Click on the **Finish** button to exit from the setup wizard.

Please note that you can start the application before exiting the setup wizard by clicking the "**Launch SimpliTRACE Express**" box once the installation is finished.

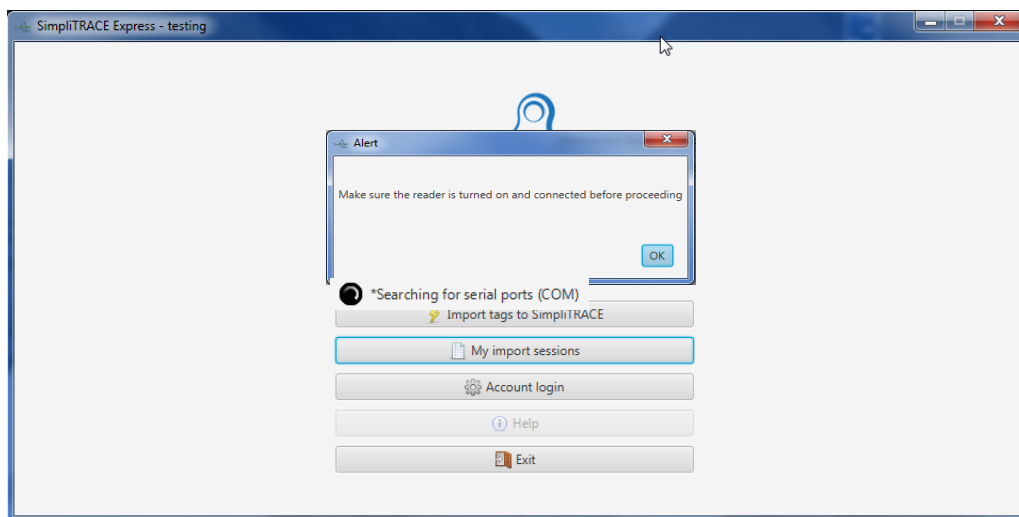


**9. During your first use, you must enter your user name and your password for SimpliTRACE. If you do not have this information, contact ATQ Customer Service or refer to « [Installation Steps](#) » .**

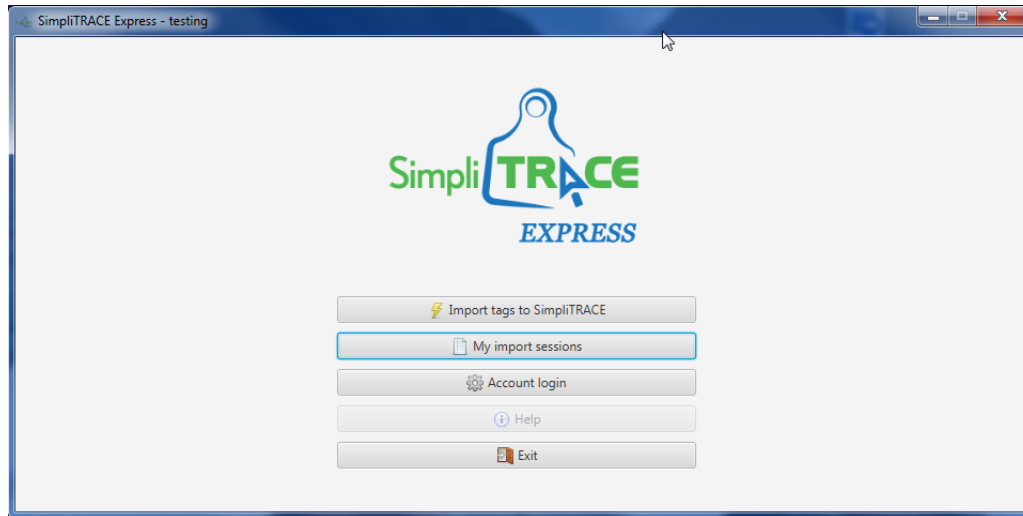


Once the installation is finished, the SimpliTRACE Express welcome page will be displayed. This page will open each time that you access the application to import data from your stick reader. A message will remind you to connect your stick reader to the computer and turn it on. Click the **OK** button to access the application's menu.

### ***SimpliTRACE Express welcome page***



## Application Menu



We invite you to consult the [user's guide](#) to find out more about the functions in this application.